

Flowfresh FC



Description

Flowfresh FC is an antimicrobial treated cementitious urethane floor coating, designed to complement the Flowfresh antimicrobial flooring system.

Flowfresh FC is based on over 30 years of polyurethane flooring technology.

Uses

To coat polyurethane floors to give a slip resistance profile, while retaining chemical resistance and durability.

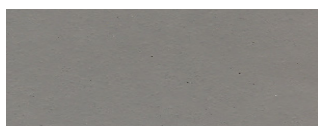
Benefits

- Contains Polygiene® antimicrobial additive
- Very high chemical resistance
- Non-tainting, non-dusting
- High abrasion resistance
- Low odor during application

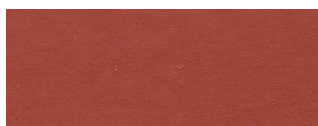
Project References

Baxter, Nive Nunspeet, Fruttigel S.c.r.l., Masterfoods, Rendi-Bake, HEB Foods, BAR S Meats, Coors Brewing, Kraft Foods, Cadbury, Heinz, Cott Beverage, Coca-Cola.

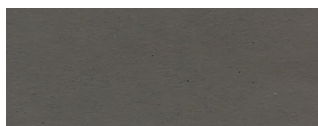
Standard Color Chart



Mid Gray



Red



Dark Gray



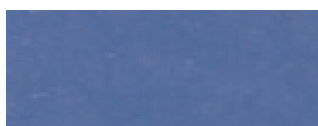
Khaki



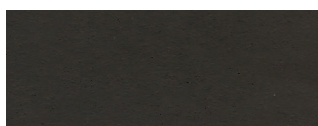
Green



Cream



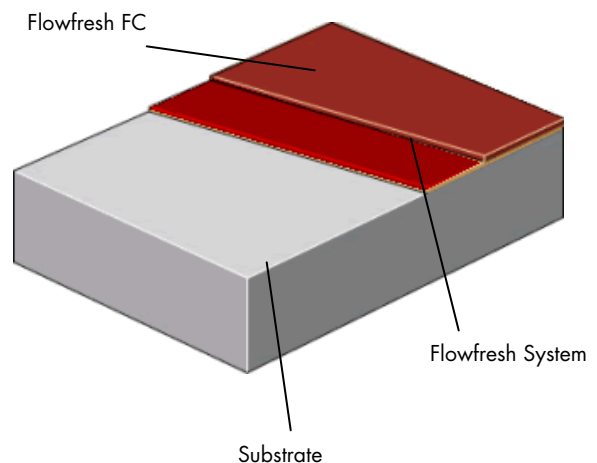
Blue



Black

The applied colors may differ slightly from the examples shown above. Contact our customer services for a true color sample or a special color match.

System Design



Model Specification

Product: Flowfresh FC

Finish: Semi-Matte

Preparatory work and application in accordance with suppliers instructions.

Supplier: Flowcrete North America, Inc.

Telephone : Customer Service 936 539 6700

Substrate Requirements

Concrete or screed substrate should have a minimum of 3,625 psi compressive strength, free from laitance, dust and other contamination. The substrate should be dry to ASTM requirements and free from excessive moisture vapor transmission.

Products Included in this System

Flowfresh FC – 17 lb unit

- 80-120 sq ft/ unit as primer and sealer coat

Detailed application instructions are available upon request.

*Coverages listed are theoretical, actual coverages may vary based on substrate and site variations.

Primer

Under certain conditions, out-gassing of the concrete may cause surface defects in the finished Flowfresh topping and priming of the concrete surface may be required. Install a test patch in the area of concrete to determine if priming is necessary.

Installation Service

The installation should be carried out by a Flowcrete preferred contractor with a documented quality assurance program. Obtain details of our preferred contractors by contacting our customer service team or enquiring via our web site www.flowcreteamericas.com

Color Stability

Flowfresh FC is not color fast and may change color over time (exhibits a yellowing effect). Color change depends on the UV light and heat levels present and hence, the rate of change cannot be predicted. This is more noticeable in light colors and grays, but does not compromise the product's chemical resistance or physical characteristics.

Polygiene: Microbial & Fungal Resistance

All Flowfresh products include a built in high performance anti-microbial, Polygiene. This silver-based additive inhibits the growth of bacteria and molds and guards against product degradation and odors caused by these microorganisms. Detailed anti-microbial information and test results are available upon request.

Technical Information

The figures that follow are typical properties achieved in laboratory tests at 70°F and at 50% Relative Humidity.

Compressive Strength	>7,250 psi	(ASTM C 579)
Tensile Strength	1,740 psi	(ASTM C 307)
Impact Resistance	No visible damage or deterioration at minimum 160 in-lb	
Flexural Strength	2,900 psi	(ASTM C 580)
Modulus of Elasticity	1.7 x 10 ⁵	(ASTM C 469)
Water Absorption	< 0.1%	
Abrasion Resistance	0.07 g loss	(ASTM D 4060)
	CS-17 Wheel, 1,000 cycles	
Adhesion	400 psi	(ASTM D 4541)
	100% concrete failure	
Coefficient of Friction	Passes ADA recommendations when used to topcoat Flowfresh SR. (ASTM D 2047)	
Chemical Resistance	Excellent resistance to sugars and most acids (organic and inorganic) Contact Flowcrete North America Inc. for chemical resistance chart	
VOC	10 g/l	

Aftercare - Cleaning and Maintenance

Clean regularly using a rotary scrubber drier in conjunction with a mildly alkaline detergent.

Environmental Considerations

The finished system is assessed as non-hazardous to health and the environment. The long service life and seamless surface reduce the need for repairs, maintenance and cleaning. Environmental and health considerations are controlled during manufacture and application of the products by Flowcrete staff and fully trained and experienced contractors.

Important Note - Warranty

Flowcrete's products are guaranteed against defective materials and manufacture and are sold subject to our standard Warranty, Terms and Conditions of Sale, copies of which can be obtained on request. Warranty does not cover suitability, fit for purpose or any consequential or related damages. Please review warranty in detail before using products.

Further Information

If you would like additional information please consult our Technical Advisory Team at the number listed below or visit our website to register your interest in specifying a Flowcrete flooring system.

Disclaimer: Any recommendation or suggestion relating to the use of the products made by Flowcrete North America, Inc., whether in its technical literature, or in response to a specific enquiry, or otherwise, is based upon data believed to be reliable, however the products and information are intended for use by Customers having requisite skill and know-how in the industry and therefore it is for the Customer to satisfy itself of the suitability of the products for its own particular use and it shall be deemed that the Customer has done so at its sole discretion and risk.



Flowcrete North America, Inc.
11133 I-45 South, Suite K
Conroe, Texas 77302
Tel: 936 539 6700 Fax: 936 539 6701
Email: usa@flowcrete.com
Flowcrete North America, Inc. is an RPM company

www.flowcreteamericas.com